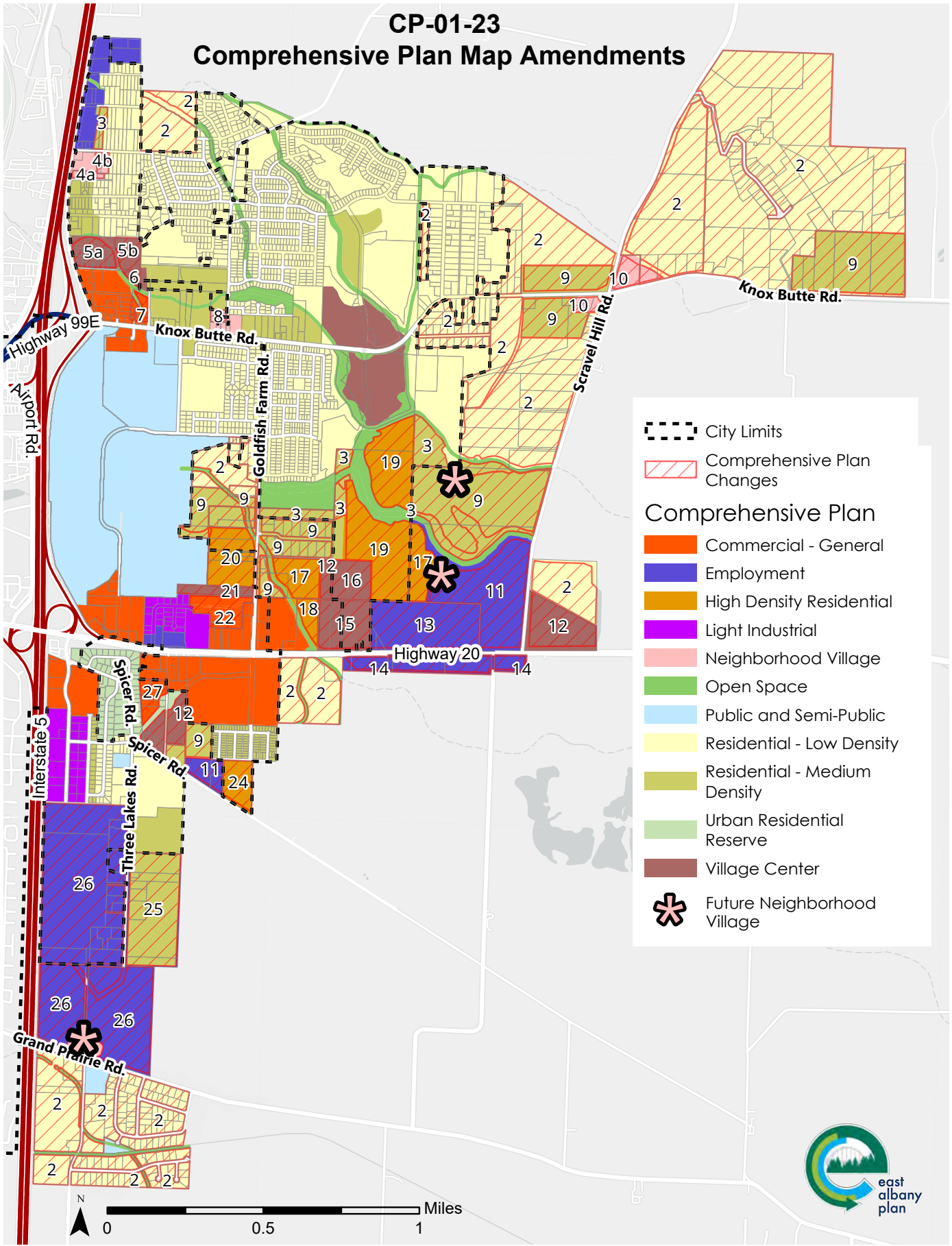
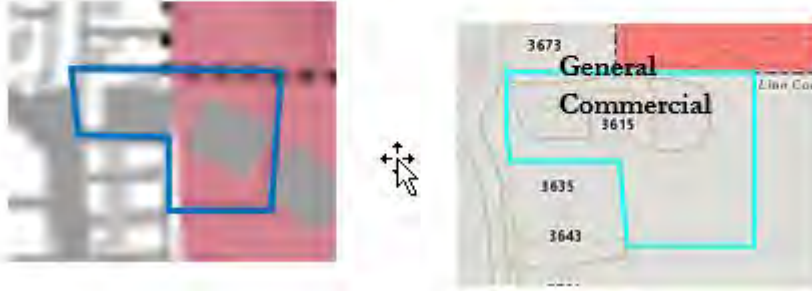


CP-01-23

Comprehensive Plan Map Amendments



Approve the East Albany Plan related amendments as modified by the City Council to include designating 3615 Spicer Drive SE to General Commercial on the Comprehensive Plan map.



**CP-01-23
East Albany Plan**

Comprehensive Plan Map Amendments

| Area | Current Comp Plan | Proposed Comp Plan |
|------|---------------------------|----------------------|
| 1 | Res Low Density | Employment |
| 2 | Urban Residential Reserve | Res Low Density |
| 3 | Res Low Density | Res Medium Density |
| 4a | Res Low Density | Neighborhood Village |
| 4b | Res Medium Density | Neighborhood Village |
| 5a | Res Low Density | Village Center |
| 5b | Res Medium Density | Village Center |
| 6 | Commercial General | Village Center |
| 7 | Res Medium Density | General Commercial |
| 8 | Res Medium Density | Neighborhood Village |
| 9 | Urban Residential Reserve | Res Medium Density |
| 10 | Urban Residential Reserve | Neighborhood Village |
| 11 | Urban Residential Reserve | Employment |
| 12 | Urban Residential Reserve | Village Center |
| 13 | Res Medium Density | Employment |
| 14 | Commercial Light | Employment |
| 15 | Commercial Light | Village Center |
| 16 | Res Low Density | Village Center |
| 17 | Urban Residential Reserve | Res High Density |
| 18 | Commercial Light | Res High Density |
| 19 | Res Low Density | Res High Density |
| 20 | Light Industrial | Res High Density |
| 21 | Light Industrial | Village Center |
| 22 | Light Industrial | Commercial General |
| 23 | Commercial General | Employment |
| 24 | Res Medium Density | Res High Density |
| 25 | Light Industrial | Res Medium Density |
| 26 | Light Industrial | Employment |
| 27 | Urban Residential Reserve | Commercial General |