

RESOLUTION NO. 2104

F

ADOPTION OF ENGINEER'S REPORTS, AUTHORIZATION TO SECURE EASEMENTS, TO OBTAIN BIDS, TO INCREASE APPROPRIATIONS, AND TO ISSUE WARRANTS FOR CONSTRUCTION OF SS-79-15 AND ST-79-14, FRIDAY'S FAIRWAY.

BE IT RESOLVED That the reports of the City Engineer filed with the City Recorder on the 16 day of August , 1979, concerning

SS-79-15, Friday's Fairway
ST-79-14, Friday's Fairway

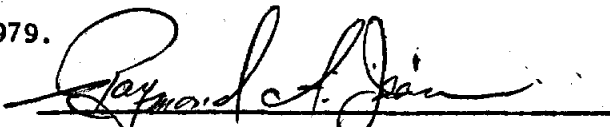
be and the same are hereby adopted.

BE IT FURTHER RESOLVED That the Council authorize the Mayor and City Recorder to sign agreements on behalf of the City of Albany for the purpose of obtaining easements to construct the said improvements, direct the City Manager to obtain bids for the construction of said projects as required by law, and authorize the Mayor and City Recorder to make, issue and negotiate General Obligation Improvement Warrants for the performance of said improvements, bearing interest not to exceed 6½% per annum, and constituting general obligations of the City of Albany. The terms of conditions of such warrants shall be as provided by ORS 287.502 to 287.510.

BE IT FURTHER RESOLVED That funds budgeted within the Improvement Fund by appropriated as follows:

<u>RESOURCE</u>	<u>FROM</u>	<u>TO</u>
<u>Improvement Fund</u>		
Bond Sale Proceeds 026-985- 86001	\$92,426.00	
026-985-84520	134,888.00	
 <u>REQUIREMENT</u>		
<u>Improvement Fund</u>		
Project # 026-985-89052 , SS-79-15		\$92,426.00
026-985-88063, ST-79-14		134,888.00

DATED this 22nd day of August , 1979.



Mayor
(Council President acting as Mayor)

ATTEST:



City Recorder

14
2104

F₁

INTERDEPARTMENTAL MEMORANDUM
Engineering Department

SUBJECT: Engineer's Report for SS-79-15 Friday's Fairway
TO: Mayor and City Council
VIA: City Manager
FROM: City Engineer
DATE: August 22, 1979

Description of Project:

This project is intended to provide sanitary sewer service to Friday's Fairway Subdivision, located west of Columbus Street and south of the SPRR tracks.

The subdivision will be served by an 8" mainline connecting to a 36" interceptor on the east side of Columbus Street.

Included in this project is 2500 lineal feet of 8" sanitary sewer mainline and 1900 lineal feet of 4" service laterals for individual hook-ups.

Summary of Estimated Costs:

A. Estimated Construction Cost	\$84,025.00	
B. 10% Contingencies	<u>8,402.50</u>	
C. Subtotal		\$92,427.50
D. 13% ELA		12,015.58
E. Television Inspection cost		<u>2,000.00</u>
F. Total Estimated Project Cost		<u>\$106,443.08</u>

Cost per square foot = $\frac{106,443.08}{\text{Cost}} \div \frac{436,611}{\text{sq. ft.}} = \underline{\underline{\$0.24}}$

Method of Assessment:

It is proposed that the benefiting properties be assessed on a square foot basis to a maximum depth of 100 feet.

Assessment Data:

Please refer to attached sheets.

Respectfully submitted,

Benjamin Shaw
Benjamin Shaw
Civil Engineer I

kja

Approved by:

T. Wayne Hickey
T. Wayne Hickey, P. E.
City Engineer

/ 15

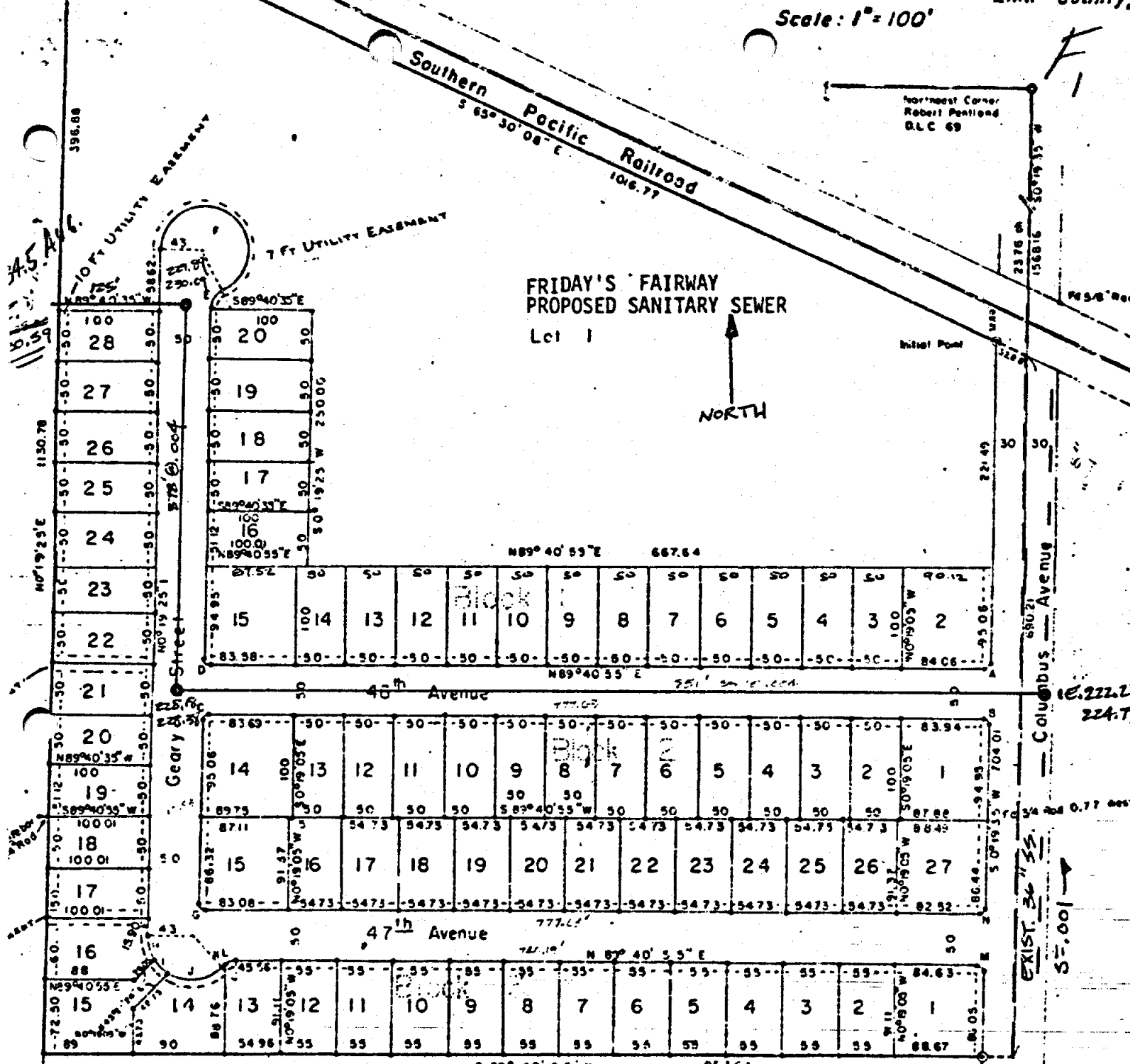
F
1

Southern Pacific Railroad
S 65° 30' 08" E
106.77

Northeast Corner
Robert Pentland
D.L.C. 69

FRIDAY'S FAIRWAY
PROPOSED SANITARY SEWER
Lot 1

NORTH



Curve	Radius	Delta	Length	Chord
A	500	89° 21' 20"	7.80	7.03
B	500	90° 36' 40"	7.91	7.11
C	500	89° 21' 30"	7.79	7.03
D	500	90° 38' 30"	7.91	7.11
E	2000	84° 37' 23"	22.56	21.39
F	4300	244° 37' 23"	183.59	72.68
G	500	90° 38' 30"	7.91	7.11
H	4300	53° 29' 29"	25.14	24.16
I	4300	26° 55' 24"	20.21	20.02
J	4300	74° 58' 32"	56.02	52.14
K	2000	18° 22' 49"	5.72	5.69
L	2000	28° 02' 06"	9.79	9.69
M	500	90° 38' 40"	7.91	7.11
N	500	89° 21' 20"	7.80	7.03

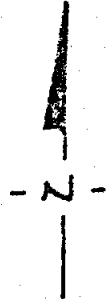
1/2 Set 50' x 30' Von Rod

EXIST. 36" S.S.
S=1.00

1/4 Cor. S.S.
Robert S. 2nd
D.L.C. 53
24118 111

F

SOUTHERN PACIFIC RAILROAD

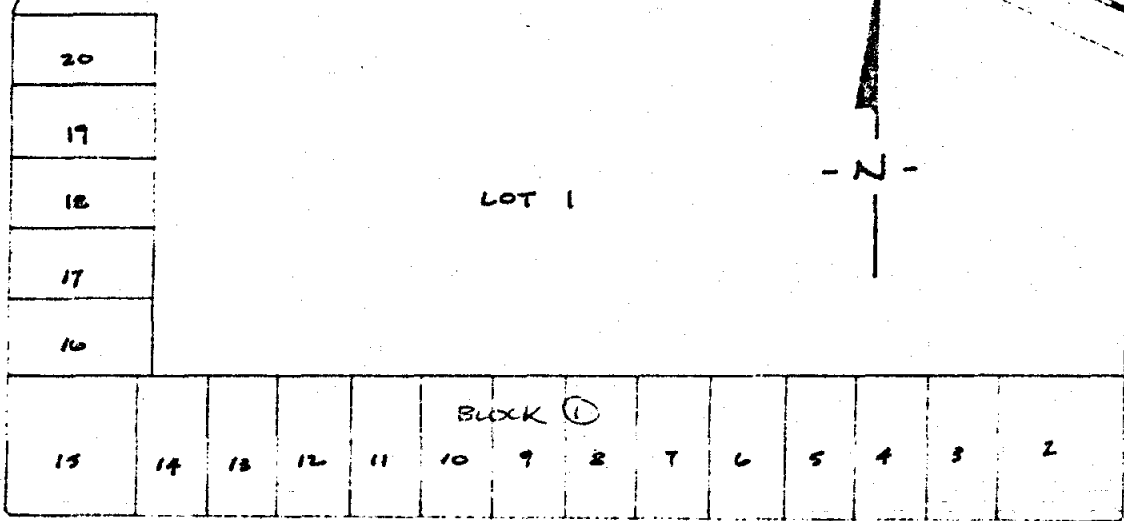
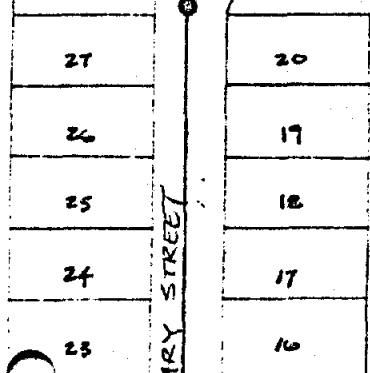


LOT 1

GEARY STREET

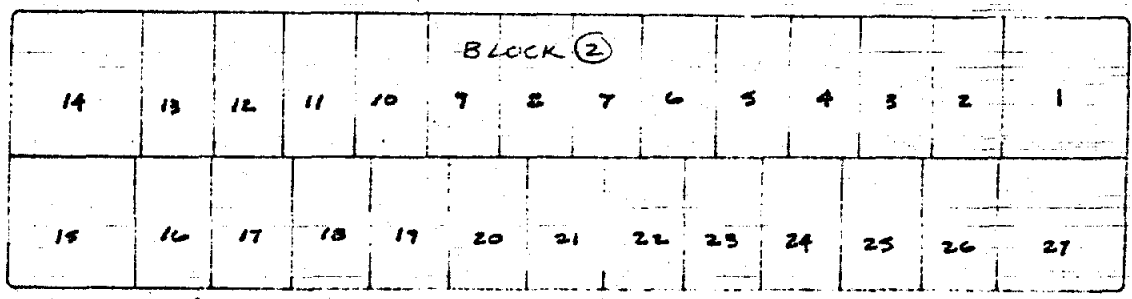
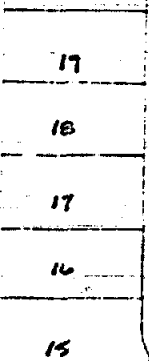
COLUMBUS STREET

EXIST 36" SS.

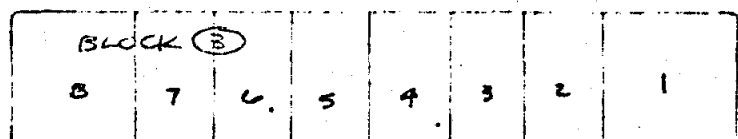
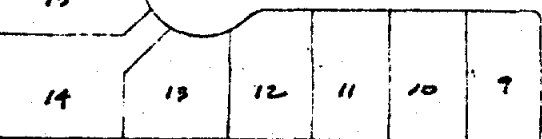


16TH AVENUE

PROPOSED 8" SS.



17TH AVENUE



CITY OF ALBANY
ENGINEERING DEPT.
ST-79-14 & SS-79-15
FRIDAY'S FAIRWAY

17

PROPERTY AND ESTIMATED ASSESSMENT DATA

SS-79-15 Friday's Fairway

Office of the City Engineer

NO.	OWNER/ADDRESS	TAX LOT AND DESCRIPTION	ASSESS. SQ. FT.	TOTAL ESTIMATED ASSESSMENT
1.	* 1st Church of the Nazarene	11-3W-Sec. 20 Lot 1, Block 1- Friday's Fairway	41,203	10,045.04
2.	Thomas Campbell	11-3W-Sec. 20 Lot 2, Block 1 Friday's Fairway	8,566	2,088.34
3.	Thomas Campbell	11-3W-Sec. 20 Lot 3, Block 1 Friday's Fairway	5,000	1,218.97
4.	Thomas Campbell	11-3W-Sec. 20 Lot 4, Block 1 Friday's Fairway	5,000	1,218.97
5.	Thomas Campbell	11-3W-Sec 20 Lot 5, Block 1 Friday's Fairway	5,000	1,218.97
6.	Thomas Campbell	11-3W-Sec 20 Lot 6, Block 1 Friday's Fairway	5,000	1,218.97
7.	Thomas Campbell	11-3W-Sec 20 Lot 7, Block 1 Friday's Fairway	5,000	1,218.97

PROPERTY AND ESTIMATED ASSESSMENT DATA

SS-79-15 Friday's Fairway

Office of the City Engineer

NO.	OWNER/ADDRESS	TAX LOT AND DESCRIPTION	ASSESS. SQ. FT.	TOTAL ESTIMATED ASSESSMENT
8.	Thomas Campbell	Lot 8, Block 1 Friday's Fairway	5,000	1,218.97
9.	Thomas Campbell	Lot 9, Block 1	5,000	1,218.97
10.	Thomas Campbell	Lot 10, Block 1	5,000	1,218.97
11.	Thomas Campbell	Lot 11, Block 1	5,000	1,218.97
12.	Thomas Campbell	Lot 12, Block 1	5,000	1,218.97
13.	Thomas Campbell	Lot 13, Block 1	5,000	1,218.97
14.	Thomas Campbell	Lot 14, Block 1	5,000	1,218.97

PROPERTY AND ESTIMATED ASSESSMENT DATA

SS-79-15 Friday's Fairway

Office of the City Engineer

NO.	OWNER/ADDRESS	TAX LOT AND DESCRIPTION	ASSESS. SQ. FT.	TOTAL ESTIMATED ASSESSMENT
15.	Thomas Campbell	11-3W-20 Lot 15, Block 1	8,740	2,130.76
16.	Thomas Campbell	Lot 16, Block 1	5,056	1,232.62
17.	Thomas Campbell	Lot 17, Block 1	5,000	1,218.97
18.	Thomas Campbell	Lot 18, Block 1	5,000	1,218.97
19.	Thomas Campbell	Lot 19, Block 1	5,000	1,218.97
20.	Thomas Campbell	Lot 20, Block 1	5,000	1,218.97
21.	Thomas Campbell	Lot 1, Block 2	8,395	2,046.65

PROPERTY AND ESTIMATED ASSESSMENT DATA

SS-79-15 Friday's Fairway

Office of the City Engineer

NO.	OWNER/ADDRESS	TAX LOT AND DESCRIPTION	ASSESS. SQ. FT.	TOTAL ESTIMATED ASSESSMENT
22.	Thomas Campbell	11-3W-20 Lot 2, Block 2 Friday's Fairway	5,000	1,218.97
23.	Thomas Campbell	Lot 3, Block 2	5,000	1,218.97
24.	Thomas Campbell	Lot 4, Block 2	5,000	1,218.97
25.	Thomas Campbell	Lot 5, Block 2	5,000	1,218.97
26.	Thomas Campbell	Lot 6, Block 2	5,000	1,218.97
27.	Thomas Campbell	Lot 7, Block 2	5,000	1,218.97
28.	Thomas Campbell	Lot 8, Block 2	5,000	1,218.97

PROPERTY AND ESTIMATED ASSESSMENT DATA

SS-79-15 Friday's Fairway

Office of the City Engineer

NO.	OWNER/ADDRESS	TAX LOT AND DESCRIPTION	ASSESS. SQ. FT.	TOTAL ESTIMATED ASSESSMENT
29.	Thomas Campbell	11-3W-20 Lot 9, Block 2 Friday's Fairway	5,000	1,218.97
30.	Thomas Campbell	Lot 10, Block 2	5,000	1,218.97
31.	Thomas Campbell	Lot 11, Block 2	5,000	1,218.97
32.	Thomas Campbell	Lot 12, Block 2	5,000	1,218.97
33.	Thomas Campbell	Lot 13, Block 2	5,000	1,218.97
34.	Thomas Campbell	Lot 14, Block 2	8,963	2,185.12
35.	Thomas Campbell	Lot 15, Block 2	7,947	1,937.43

PROPERTY AND ESTIMATED ASSESSMENT DATA

SS-79-15 Friday's Fairway

Office of the City Engineer

NO.	OWNER/ADDRESS	TAX LOT AND DESCRIPTION	ASSESS. SQ. FT.	TOTAL ESTIMATED ASSESSMENT
36.	Thomas Campbell	11-3W-20 Lot 16, Block 2 Friday's Fairway	5,001	1,219.21
37.	Thomas Campbell	Lot 17, Block 2	5,001	1,219.21
38.	Thomas Campbell	Lot 18, Block 2	5,001	1,219.21
39.	Thomas Campbell	Lot 19, Block 2	5,001	1,219.21
40.	Thomas Campbell	Lot 20, Block 2	5,001	1,219.21
41.	Thomas Campbell	Lot 21, Block 2	5,001	1,219.21
42.	Thomas Campbell	Lot 22, Block 2	5,001	1,219.21

PROPERTY AND ESTIMATED ASSESSMENT DATA

SS-79-15 Friday's Fairway

Office of the City Engineer

NO.	OWNER/ADDRESS	TAX LOT AND DESCRIPTION	ASSESS. SQ. FT.	TOTAL ESTIMATED ASSESSMENT
43.	Thomas Campbell	11-3W-20 Lot 23, Block 2 Friday's Fairway	5,001	1,219.21
44.	Thomas Campbell	Lot 24, Block 2	5,001	1,219.21
45.	Thomas Campbell	Lot 25, Block 2	5,001	1,219.21
46.	Thomas Campbell	Lot 26, Block 2	5,001	1,219.21
47.	Thomas Campbell	Lot 27, Block 2	8,041	1,960.36
48.	Thomas Campbell	Lot 1, Block 3	8,033	1,958.40
49.	Thomas Campbell	Lot 2, Block 3	5,000	1,218.97

PROPERTY AND ESTIMATED ASSESSMENT DATA

SS-79-15 Friday's Fairway

Office of the City Engineer

NO.	OWNER/ADDRESS	TAX LOT AND DESCRIPTION	ASSESS. SQ. FT.	TOTAL ESTIMATED ASSESSMENT
50.	Thomas Campbell	11-3W-20 Lot 3, Block 3 Friday's Fairway	5,000	1,218.97
51.	Thomas Campbell	Lot 4, Block 3	5,000	1,218.97
52.	Thomas Campbell	Lot 5, Block 3	5,000	1,218.97
53.	Thomas Campbell	Lot 6, Block 3	5,000	1,218.97
54.	Thomas Campbell	Lot 7, Block 3	5,000	1,218.97
55.	Thomas Campbell	Lot 8, Block 3	8,006	1,951.81
56.	Thomas Campbell	Lot 9, Block 3	5,000	1,218.97

PROPERTY AND ESTIMATED ASSESSMENT DATA

SS-79-15 Friday's Fairway

Office of the City Engineer

NO.	OWNER/ADDRESS	TAX LOT AND DESCRIPTION	ASSESS. SQ. FT.	TOTAL ESTIMATED ASSESSMENT
57.	Thomas Campbell	11-3W-20 Lot 10, Block 3 Friday's Fairway	5,000	1,218.97
58.	Thomas Campbell	Lot 11, Block 3	5,000	1,218.97
59.	Thomas Campbell	Lot 12, Block 3	4,985	1,215.31
60.	Thomas Campbell	Lot 13, Block 3	5,108	1,245.30
61.	Thomas Campbell	Lot 14, Block 3	7,199	1,755.07
62.	Thomas Campbell	Lot 15, Block 3	6,300	1,535.90
63.	Thomas Campbell	Lot 16, Block 3	5,001	1,219.21

PROPERTY AND ESTIMATED ASSESSMENT DATA

SS-79-15 Friday's Fairway

Office of the City Engineer

NO.	OWNER/ADDRESS	TAX LOT AND DESCRIPTION	ASSESS. SQ. FT.	TOTAL ESTIMATED ASSESSMENT
64.	Thomas Campbell	11-3W-20 Lot 17, Block 3 Friday's Fairway	5,001	1,219.21
65.	Thomas Campbell	Lot 18, Block 3	5,056	1,232.62
66.	Thomas Campbell	Lot 19, Block 3	5,000	1,218.97
67.	Thomas Campbell	Lot 20, Block 3	5,000	1,218.97
68.	Thomas Campbell	Lot 21, Block 3	5,000	1,218.97
69.	Thomas Campbell	Lot 22, Block 3	5,000	1,218.97
70.	Thomas Campbell	Lot 23, Block 3	5,000	1,218.97

PROPERTY AND ESTIMATED ASSESSMENT DATA

Office of the City Engineer

SS-79-15 Friday's Fairway

NO.	OWNER/ADDRESS	TAX LOT AND DESCRIPTION	ASSESS. SQ. FT.	TOTAL ESTIMATED ASSESSMENT
71.	Thomas Campbell	11-3W-20 Lot 24, Block 3 Friday's Fairway	5,000	1,218.97
72.	Thomas Campbell	Lot 25, Block 3	5,000	1,218.97
73.	Thomas Campbell	Lot 26, Block 3	5,000	1,218.97
74.	Thomas Campbell	Lot 27, Block 3	5,000	1,218.97
TOTAL			436,611	106,443.08

F

INTERDEPARTMENTAL MEMORANDUM
Engineering Department

SUBJECT: Engineer's Report for ST-79-14, Friday's Fairway

TO: Mayor and City Council
VIA: City Manager
FROM: City Engineer

DATE: August 22, 1979

Description of Project:

This Project is intended to provide access and storm drainage to Friday's Fairway Subdivision, located south of S.P. tracks and west of Columbus Street.

The structural section includes a 36 foot wide street with standard curb and gutter, 3½" of asphaltic concrete over 9" of base rock, 1127 lineal feet of 15" and 173 lineal feet of 18" storm drain pipe.

A 28 foot wide street will be stubbed to the south, for future development, off
Summary of Estimated Costs: of 47th Avenue.

A.	Estimated Construction Cost	\$122,625.30	
	Contingencies 10%	12,262.53	
	Subtotal		\$134,887.83
B.	Project Cost Data:		
	(1) SCF Intersection Cost	\$ 2,000.00	
	(2) SCF Corner Lot Credit	6,545.45	
	(3) Total SCF Cost		\$ 8,545.45
	(4) Property Owner Construction Cost	126,342.38	
	(5) Total Estimated Construction Cost		134,887.83
C.	Estimated Assessment Cost		
	(1) SCF Assessment	\$ 8,545.45	
	E.L.A. 15%	1,281.82	
	Total SCF		9,827.27
	(2) Estimated Property Owner Assessments:		
	Estimated Construction Cost	\$126,342.38	
	E.L.A. 15%	18,951.36	
	Collection for SCF:		
	\$5.00 x 4,494.52 =		
	cost feet		22,472.60
	Warrant Interest	1,956.10	
	Total Estimated Property Owner Assessment		\$169,722.44
	Cost per front foot = $\frac{169,722.44}{\text{cost}}$ ÷ $\frac{4,494.52}{\text{front feet}}$ = \$37.76		

18

Engineer's Report for ST-79-14, Friday's Fairway
August 22, 1979
Page Two

F₁

Method of Assessment:

It is proposed that the benefiting properties be assessed on a front foot basis as per Resolution No. 1392.

Assessment Data:

Please refer to attached sheets.

Respectfully submitted,

Benjamin Shaw

Benjamin Shaw
Civil Engineer I

Approved by,

T. Wayne Hickey

T. Wayne Hickey, P.E.
City Engineer

aph

19

PROPERTY AND ESTIMATED ASSESSMENT DATA

ST-79-14 Friday's Fairway

Office of the City Engineer

NO.	OWNER/ADDRESS	TAX LOT AND DESCRIPTION	ASSESS. FR. FT.	CORNER LOT CREDIT	TOTAL ASSESS. FR. FT.	TOTAL ESTIM. ASSESS.
1.	1st Church of the Nazarene	11-3W-20 Lot 1, Block 1 Friday's Fairway	264.77	--	264.77	9,998.27
2.	Thomas Campbell	Lot 2, Block 1 Friday's Fairway	84.06	--	84.06	3,174.28
3.	Thomas Campbell	Lot 3, Block 1	50	--	50	1,888.10
4.	Thomas Campbell	Lot 4, Block 1	50	--	50	1,888.10
5.	Thomas Campbell	Lot 5, Block 1	50	--	50	1,888.10
6.	Thomas Campbell	Lot 6, Block 1	50	--	50	1,888.10
7.	Thomas Campbell	Lot 7, Block 1	50	--	50	1,888.10

PROPERTY AND ESTIMATED ASSESSMENT DATA

ST-79-14 Friday's Fairway

Office of the City Engineer

NO.	OWNER/ADDRESS	TAX LOT AND DESCRIPTION	ASSESS. FR. FT.	Office of the City Engineer		TOTAL ESTIM. ASSESS.
				CORNER LOT CREDIT	TOTAL ASSESS. FR. FT.	
8.	Thomas Campbell	11-3W-20 Lot 8, Block 1 Friday's Fairway	50	--	50	1,888.10
9.	Thomas Campbell	Lot 9, Block 1	50	--	50	1,888.10
10.	Thomas Campbell	Lot 10, Block 1	50	--	50	1,888.10
11.	Thomas Campbell	Lot 11, Block 1	50	--	50	1,888.10
12.	Thomas Campbell	Lot 12, Block 1	50	--	50	1,888.10
13.	Thomas Campbell	Lot 13, Block 1	50	--	50	1,888.10
14.	Thomas Campbell	Lot 14, Block 1	50	--	50	1,888.10

PROPERTY AND ESTIMATED ASSESSMENT DATA

ST-79-14 Friday's Fairway

Office of the City Engineer

NO.	OWNER/ADDRESS	TAX LOT AND DESCRIPTION	ASSESS. FR. FT.	CORNER LOT CREDIT	TOTAL ASSESS. FR. FT.	TOTAL ESTIM. ASSESS.
15.	Thomas Campbell	11-3W-20 Lot 15, Block 1 Friday's Fairway	186.44	47.43	139.01	5,249.31
16.	Thomas Campbell	Lot 16, Block 1	51.12	--	51.12	1,930.40
17.	Thomas Campbell	Lot 17, Block 1	50	--	50	1,888.10
18.	Thomas Campbell	Lot 18, Block 1	50	--	50	1,888.10
19.	Thomas Campbell	Lot 19, Block 1	50	--	50	1,888.10
20.	Thomas Campbell	Lot 20, Block 1	50	--	50	1,888.10
21.	Thomas Campbell	Lot 1, Block 2 Friday's Fairway	83.94	--	83.94	3,169.75

PROPERTY AND ESTIMATED ASSESSMENT DATA

ST-79-14 Friday's Fairway

Office of the City Engineer

NO.	OWNER/ADDRESS	TAX LOT AND DESCRIPTION	ASSESS. FR. FT.	Office of the City Engineer		TOTAL ESTIM. ASSESS.
				CORNER LOT CREDIT	TOTAL ASSESS. FR. FT.	
22.	Thomas Campbell	11-3W-20 Lot 2, Block 2 Friday's Fairway	50	--	50	1,888.10
23.	Thomas Campbell	Lot 3, Block 2	50	--	50	1,888.10
24.	Thomas Campbell	Lot 4, Block 2	50	--	50	1,888.10
25.	Thomas Campbell	Lot 5, Block 2	50	--	50	1,888.10
26.	Thomas Campbell	Lot 6, Block 2	50	--	50	1,888.10
27.	Thomas Campbell	Lot 7, Block 2	50	--	50	1,888.10
28.	Thomas Campbell	Lot 8, Block 2	50	--	50	1,888.10

PROPERTY AND ESTIMATED ASSESSMENT DATA

ST-79-15 Friday's Fairway

Office of the City Engineer

NO.	OWNER/ADDRESS	TAX LOT AND DESCRIPTION	ASSESS. FR. FT.	CORNER LOT CREDIT	TOTAL ASSESS. FR. FT.	TOTAL ESTIM. ASSESS.
29.	Thomas Campbell	11-3W-20 Lot 9, Block 2 Friday's Fairway	50	--	50	1,888.10
30.	Thomas Campbell	Lot 10, Block 2	50	--	50	1,888.10
31.	Thomas Campbell	Lot 11, Block 2	50	--	50	1,888.10
32.	Thomas Campbell	Lot 12, Block 2	50	--	50	1,888.10
33.	Thomas Campbell	Lot 13, Block 2	50	--	50	1,888.10
34.	Thomas Campbell	Lot 14; Block 2	186.66	47.53	139.13	5,253.84
35.	Thomas Campbell	Lot 15, Block 2	177.31	43.16	134.15	5,065.78

PROPERTY AND ESTIMATED ASSESSMENT DATA

ST-79-14 Friday's Fairway

Office of the City Engineer

NO.	OWNER/ADDRESS	TAX LOT AND DESCRIPTION	ASSESS. FR. FT.	Office of the City Engineer		
				CORNER LOT CREDIT	TOTAL ASSESS. FR. FT.	TOTAL ESTIM. ASSESS.
36.	Thomas Campbell	11-3W-20 Lot 16, Block 2 Friday's Fairway	54.73	--	54.73	2,066.72
37.	Thomas Campbell	Lot 17, Block 2	54.73	--	54.73	2,066.72
38.	Thomas Campbell	Lot 18, Block 2	54.73	--	54.73	2,066.72
39.	Thomas Campbell	Lot 19, Block 2	54.73	--	54.73	2,066.72
40.	Thomas Campbell	Lot 20, Block 2	54.73	--	54.73	2,066.72
41.	Thomas Campbell	Lot 21; Block 2	54.73	--	54.73	2,066.72
42.	Thomas Campbell	Lot 22, Block 2	54.73	--	54.73	2,066.72

PROPERTY AND ESTIMATED ASSESSMENT DATA

ST-79-14 Friday's Fairway

Office of the City Engineer

NO.	OWNER/ADDRESS	TAX LOT AND DESCRIPTION	ASSESS. FR. FT.	CORNER LOT CREDIT	TOTAL ASSESS. FR. FT.	TOTAL ESTIM. ASSESS.
43.	Thomas Campbell	11-3W-20 Lot 23, Block 2 Friday's Fairway	54.73	--	54.73	2,066.72
44.	Thomas Campbell	Lot 24, Block 2	54.73	--	54.73	2,066.72
45.	Thomas Campbell	Lot 25, Block 2	54.73	--	54.73	2,066.72
46.	Thomas Campbell	Lot 26, Block 2	54.73	--	54.73	2,066.72
47.	Thomas Campbell	Lot 27, Block 2	82.52	--	82.52	3,116.13
48.	Thomas Campbell	Lot 1, Block 3	83.68	--	83.68	3,159.93
49.	Thomas Campbell	Lot 2, Block 3	54.88	--	54.88	2,072.38

PROPERTY AND ESTIMATED ASSESSMENT DATA

ST-79-14 Friday's Fairway

Office of City Engineer

NO.	OWNER/ADDRESS	TAX LOT AND DESCRIPTION	ASSESS. FR. FT.	ASSESS. SQ. FT.	TOTAL ESTIM. STREET ASSESS.	TOTAL ESTIM. STORM DRAIN ASSESSMENT
50.	Thomas Campbell	11-3W-20 Lot 3, Block 3 Friday's Fairway	54.88	--	54.88	2,072.38
51.	Thomas Campbell	Lot 4, Block 3	54.88	--	54.88	2,072.38
52.	Thomas Campbell	Lot 5, Block 3	54.88	--	54.88	2,072.38
53.	Thomas Campbell	Lot 6, Block 3	54.88	--	54.88	2,072.38
54.	Thomas Campbell	Lot 7, Block 3	54.88	--	54.88	2,072.38
55.	Thomas Campbell	Lot 8, Block 3	176.83	45.55	131.28	4,957.41
56.	Thomas Campbell	Lot 9, Block 3	143.90	45.55	98.35	3,713.90

PROPERTY AND ESTIMATED ASSESSMENT DATA

ST-79-14 Friday's Fairway

Office of City Engineer

NO.	OWNER/ADDRESS	TAX LOT AND DESCRIPTION	ASSESS. FR. FT.	ASSESS. SQ. FT.	TOTAL ESTIM. STREET ASSESS.	TOTAL ESTIM. STORM DRAIN ASSESSMENT
57.	Thomas Campbell	11-3W-20 Lot 10, Block 3 Friday's Fairway	54.88	--	54.88	2,072.38
58.	Thomas Campbell	Lot 11, Block 3	54.88	--	54.88	2,072.38
59.	Thomas Campbell	Lot 12, Block 3	59.73	--	59.73	2,255.53
60.	Thomas Campbell	Lot 13, Block 3	40.46	--	40.46	1,527.85
61.	Thomas Campbell	Lot 14, Block 3	20.21	--	20.21	763.34
62.	Thomas Campbell	Lot 15, Block 3	41.04	--	41.04	1,549.76
63.	Thomas Campbell	Lot 16, Block 3	50	--	50	1,888.10

PROPERTY AND ESTIMATED ASSESSMENT DATA

ST-79-14 Friday's Fairway

Office of City Engineer

NO.	OWNER/ADDRESS	TAX LOT AND DESCRIPTION	ASSESS. FR. FT.	ASSESS. SQ. FT.	TOTAL ESTIM. STREET ASSESS.	TOTAL ESTIM. STORM DRAIN ASSESSMENT
64.	* Thomas Campbell	11-3W-20 Lot 17, Block 3 Friday's Fairway	50	--	50	1,888.10
65.	* Thomas Campbell	Lot 18, Block 3	50	--	50	1,888.10
66.	* Thomas Campbell	Lot 19, Block 3	50	--	50	1,888.10
67.	* Thomas Campbell	Lot 20, Block 3	50	--	50	1,888.10
68.	* Thomas Campbell	Lot 21, Block 3	50	--	50	1,888.10
69.	* Thomas Campbell	Lot 22, Block 3	50	--	50	1,888.10
70.	* Thomas Campbell	Lot 23, Block 3	50	--	50	1,888.10

PROPERTY AND ESTIMATED ASSESSMENT DATA

ST-79-14 Friday's Fairway

Office of City Engineer

NO.	OWNER/ADDRESS	TAX LOT AND DESCRIPTION	ASSESS. FR. FT.	ASSESS. SQ. FT.	TOTAL ESTIM. STREET ASSESS.	TOTAL ESTIM. STORM DRAIN ASSESSMENT
71.	Thomas Campbell	11-3N-20 Lot 24, Block 3 Friday's Fairway	50	--	50	1,888.10
72.	Thomas Campbell	Lot 25, Block 3	50	--	50	1,888.10
73.	Thomas Campbell	Lot 26, Block 3	50	--	50	1,888.10
74.	Thomas Campbell	Lot 27, Block 3	50	--	50	1,888.10
			4,723.74	229.22	4,494.52	169,722.44